

# WHERE DOES THE UT HEALTH SCIENCE CENTER MAKE ITS IMPACT?

The UT Health Science Center contributes almost \$2 billion a year to the Memphis economy, enrolls 4,000 students, and is responsible for 26,700 jobs across the state. Research and external funding pumped more than \$200 million into the Health Science Center's mission in 2015.

The main campus in Memphis is home to six fully accredited health science colleges — Dentistry, Graduate Health Sciences, Health Professions,

Medicine, Nursing and Pharmacy. UTHSC also has major locations in Chattanooga, Knoxville and Nashville, and more than 100 clinical and education sites throughout the state. Public and continuing education are offered statewide, and 15 Tennessee teaching hospitals and clinical facilities are formally affiliated with UTHSC. Since its founding in 1911, UTHSC has educated more than 57,000 healthcare professionals.



A growing partnership with **Saint Thomas Health** will sustain bases of operations for all six UTHSC colleges as a foundation is laid for a greater Nashville clinical and educational presence there.

The UT College of Medicine in Nashville currently has 20 medical residents in training and plans to grow that to 100 in the next few years.



## NASHVILLE

Students have a **96%** graduation rate and a **97%** first-time board exams pass rate

UTHSC enrolls **4,000** students annually

The Colleges of Medicine, Pharmacy and Health Professions have major clinical locations at UT Medical Center, the region's only academic medical center, Magnet® recognized hospital\* and Level I Trauma Center.



The Graduate School of Medicine is a growing faculty and research hub with 213 residents and approximately 430 faculty in 11 residency and 11 fellowship programs in medicine and dentistry.



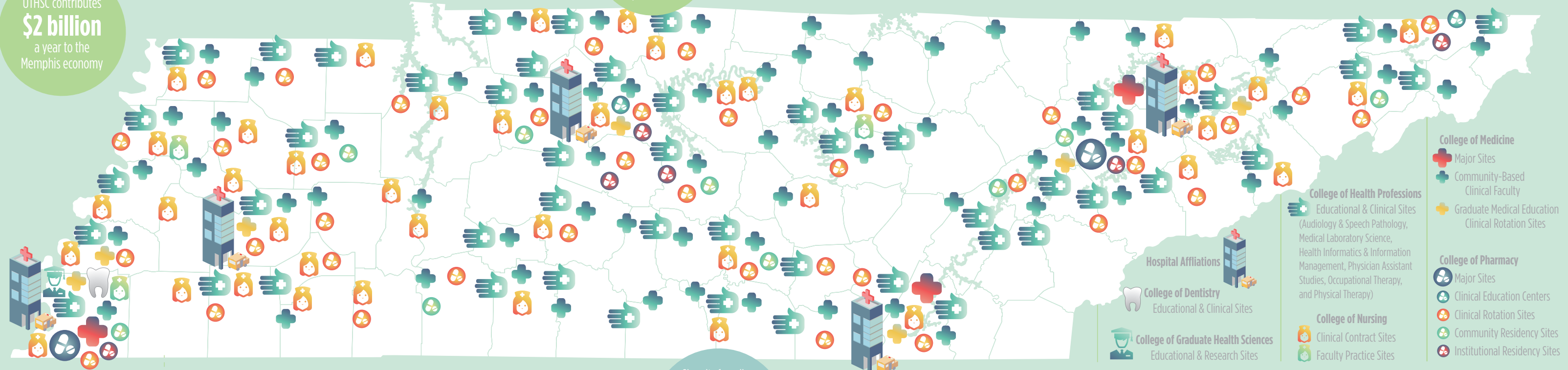
The College of Health Professions' Audiology and Speech Pathology department in Knoxville has educated students and provided clinical care for more than 60 years.

The Colleges of Dentistry and Medicine are collaborating on a core dental training site to add to residencies in general dentistry and oral and maxillofacial surgery.

## KNOXVILLE

\*recognizes healthcare organizations for quality patient care, nursing excellence and innovations in professional nursing practice

UTHSC contributes **\$2 billion** a year to the Memphis economy



- College of Medicine**
  - Major Sites
  - Community-Based Clinical Faculty
  - Graduate Medical Education Clinical Rotation Sites
- College of Health Professions**
  - Educational & Clinical Sites (Audiology & Speech Pathology, Medical Laboratory Science, Health Informatics & Information Management, Physician Assistant Studies, Occupational Therapy, and Physical Therapy)
- College of Pharmacy**
  - Major Sites
  - Clinical Education Centers
  - Clinical Rotation Sites
  - Community Residency Sites
  - Institutional Residency Sites
- College of Nursing**
  - Clinical Contract Sites
  - Faculty Practice Sites
- College of Dentistry**
  - Educational & Clinical Sites
- College of Graduate Health Sciences**
  - Educational & Research Sites
- Hospital Affiliations**

Since its founding in 1911, UTHSC has educated and trained more than **57,000** health-care professionals

## CHATTANOOGA

The UT College of Medicine's large campus is in association with **Erlanger Health**, a multi-site system with five hospitals and the only Level I Trauma Center in the tri-state region of Southeast Tennessee, North Georgia and Northeast Alabama.

UTHSC is responsible for **26,700 jobs** across the state



Approximately 460 physicians hold faculty appointments, 35 to 50 junior and senior medical students rotate at any given time, and approximately 150 individual medical students rotate each year at the UT College of Medicine Chattanooga.

## MEMPHIS



Home of four partner, teaching hospitals – **Methodist UT Hospital, Le Bonheur Children's Hospital, Regional One Health and the U.S. Department of Veterans Affairs Medical Center.**

The Health Science Center also has relationships with **Baptist Memorial Health Care, Saint Francis Hospital and St. Jude Children's Research Hospital**, where all of the more than 200 clinicians have UTHSC appointments.

